

Global New Leader for Clean Environment

# EnFac Korea

A/S TEAM




**EnFac**  
Engineering Factory Korea



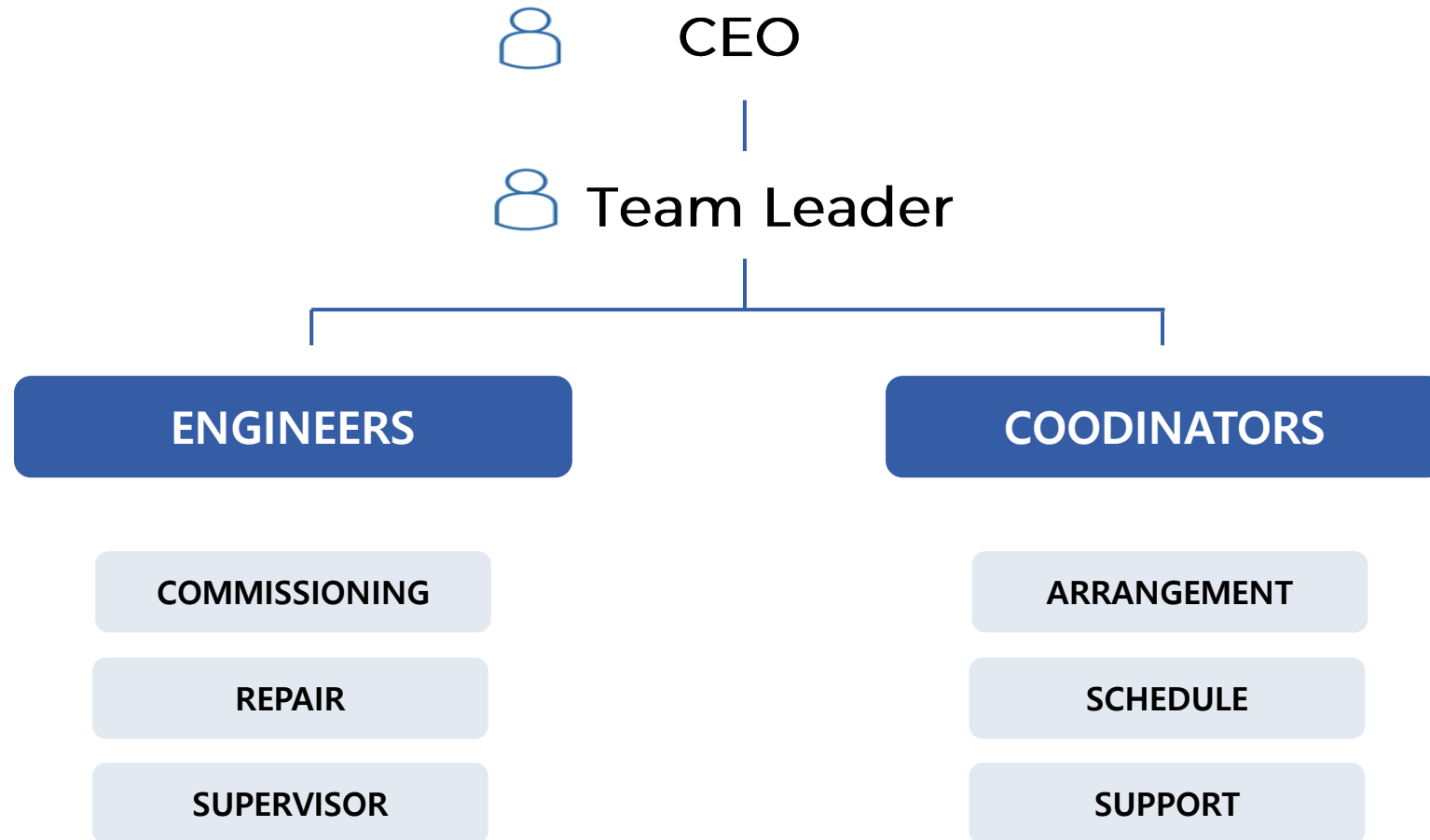
**Global new leader for  
clean environment**

welcome  
**Message**



ENFAC stands for Engineering Factory, which means we are a group of engineering specialists in Korea. We are especially engaged in ballast water management system(BWMS) as one of global leaders focusing on clean environment. We are convinced that we duly comprehend what we have to do with the system in the first place and always pull out the stops to round everything off with safety.

# A/S TEAM ORGANIZATION



# What We do?

presentation

We provide a find one-stop solution for BWMS market based on more than 10 years of experience & expertise.

- BWMS COMMISSIONING & AFTER SERVICE
- BWMS RETROFIT
- SCRUBBER RETROFIT
- AMP ENGINEERING Etc.
- SPARE PARTS





# AT YOUR **SERVICE**

## **THE PEOPLE**

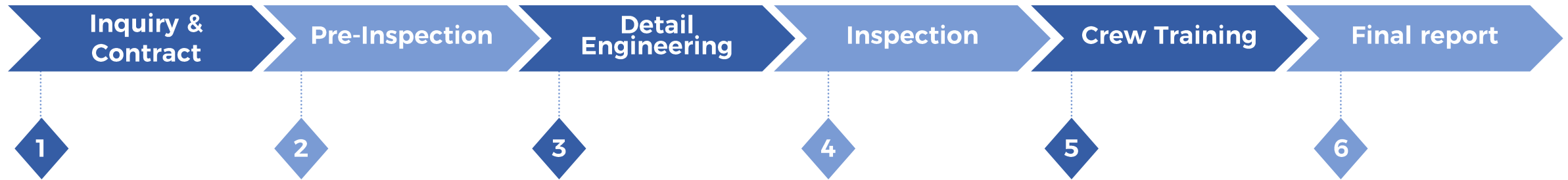
Enfac's personnel are specialists in Ballast Water Management System with significant maritime expertise.

## **THE SERVICE**

We remain at customer's disposal should they require.

# WORK PROCESS

## Commissioning



### Consultation

- Technology choice

### On-board survey

- Installation Inspection
- Visual Inspection
- Listing Required Material
- Pre-Engineering

### Installation

- Checking Electrical Wiring Status
- Installing Program for PLC and HMI
- Trouble Shooting
- Checking Leakage
- Checking Automatic Operation.

### Test

- Safety Alarm Test
- Function Test
- Ballasting
- De-Ballasting
- \* Additional Inspection Under the Contract

### Crew Training

- System Operation Description
- Main Equipment and Instruction Introduction
- Trouble Shooting
- Main Data Introduction

### Work Report

- Field Service Report
- Onboard Test Procedure
- Feedback From Shipowner

# PROCESS

# AFTER-SALES SERVICE

## Request

### Ship's Request

- Report problem
- Propose a solution



## Dispatch

### Engineer Arrangement

- Identifying engineers
- Preparing required material and program

## On-Board work

### Check & Resolve

- Discussion with crew for identifying problem
- Performing proper repair work



## Operation

### Running the System

- Test system operation without any alarm
- Confirm the A/S work with Crew

## Final Report

### Work Report

- After sales service report

# MAKER Cooperation PARTNERS



**NK CO.,LTD.**

ORIGIN : KOREA  
OZONE TYPE



**SAMKUN CENTURY**

ORIGIN : KOREA  
UV TYPE



**SUNRUI**

ORIGIN : CHINA  
FILTER + ELECTROLYSIS TYPE



**HEADWAY**

ORIGIN : CHINA  
FILTER + ELECTROLYSIS TYPE

# PROFESSIONAL QUALIFIED CERTIFICATE



# Our GOAL

ENFAC is dispatching skilled service engineers all over the world.

ENFAC is service-minded and emphasizes the importance of good customer communication. It is important for us to help customers at any time needed.

For customers with the need of technical assistance, Enfac provides a 24-hours service line :

TEL : +82 51 206 8866 / E-MAIL : [as@enfac.kr](mailto:as@enfac.kr)

LOCATION : #3F, 57, Myeongjigukje 11-ro, Gangseo-gu, Busan, Korea



# Thank You

Global New Leader for Clean Environment



**EnFac**  
Engineering Factory Korea